



Sara Hassan  
Illustration Portfolio  
[saraeveillustration.cargo.site](http://saraeveillustration.cargo.site)  
[saraevehass@icloud.com](mailto:saraevehass@icloud.com)



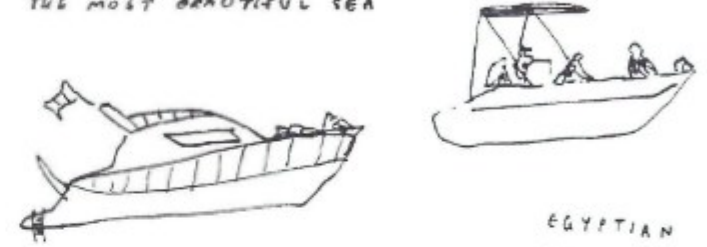
The Wandering Illustrator Volume Two  
 A series of zines exploring my personal experiences  
 with travel, titled 'Journeys', 'Exploration', and 'Time'.

Risoprinted zines, 2023.

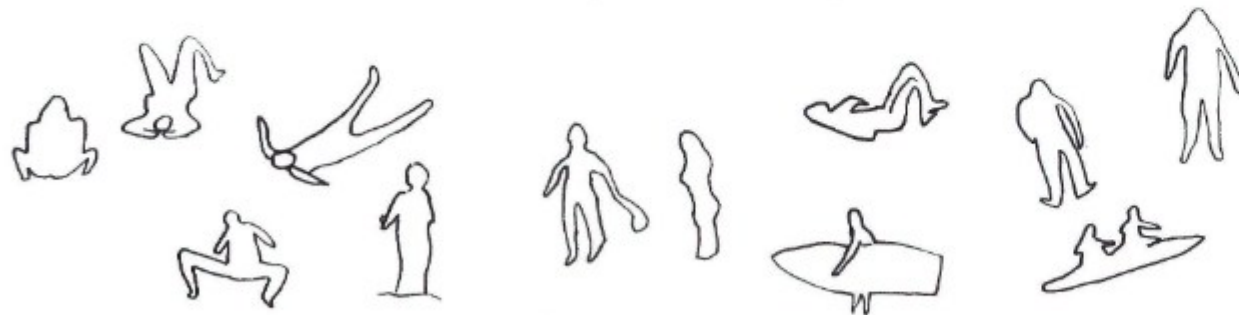
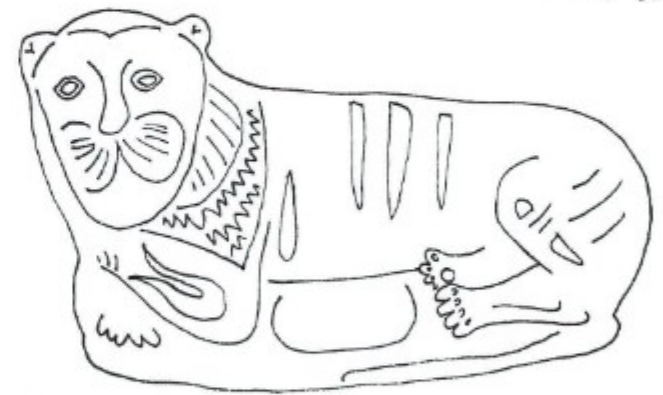
PONZA



THE MOST BEAUTIFUL SEA



EGYPTIAN  
ANTIQUE  
AT THE LOUVRE

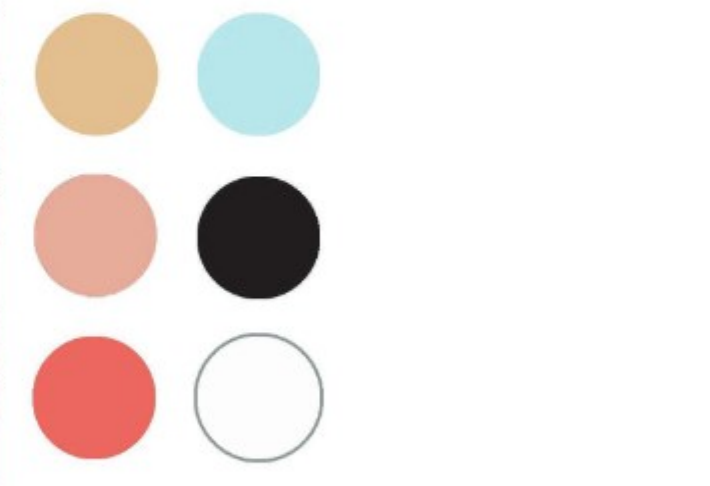
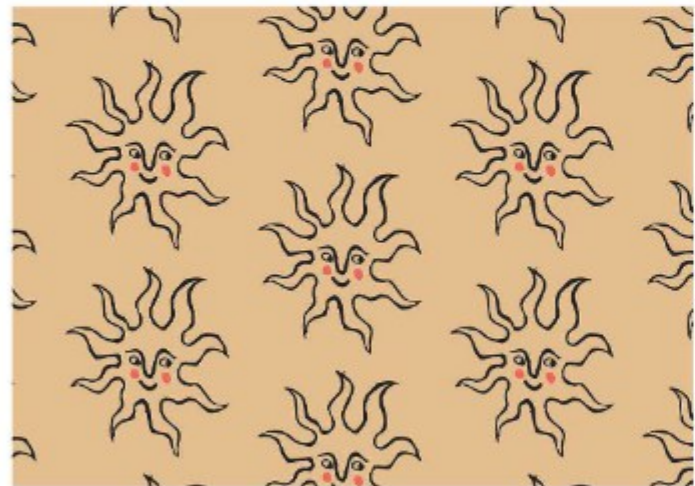
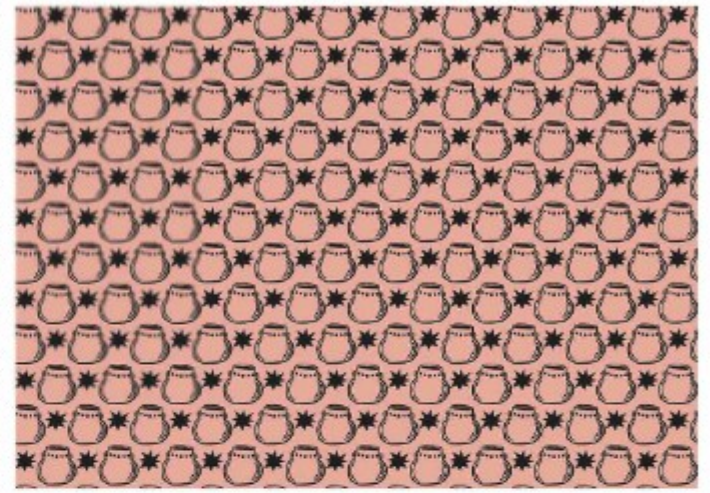
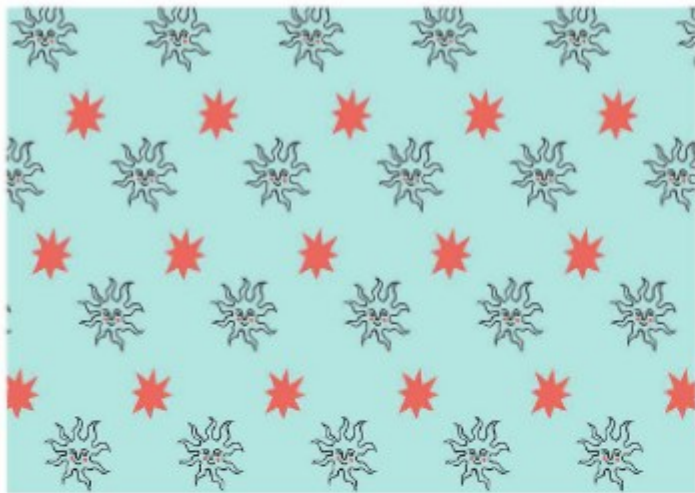


OUR FRIDGE:  
1X BIG WATER  
1X SP WATER  
2X ORANGINA  
1X COKE  
1X JUICE  
1X OASIS  
1X TONIC



The Wandering Illustrator Volume Two  
Some of my sketches from my travel zines I created in Ponza (Italy) and Paris whilst exploring each place. These drawings helped me establish concept and imagery for my zine collection.

Fineliner sketches, 2022.



## Journeys Pattern Collection

A repeat pattern collection I designed from linoprinted blocks inspired by my time spent in Europe over the summer of 2022.

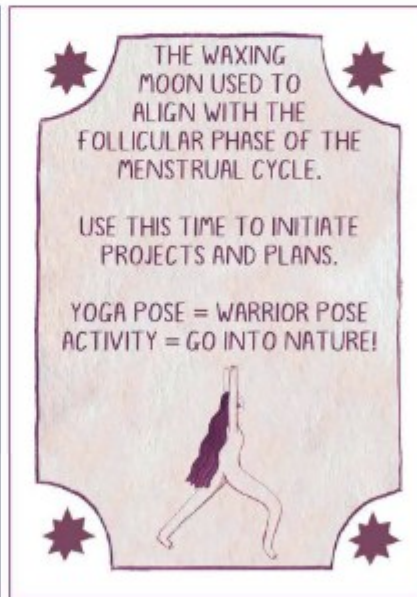
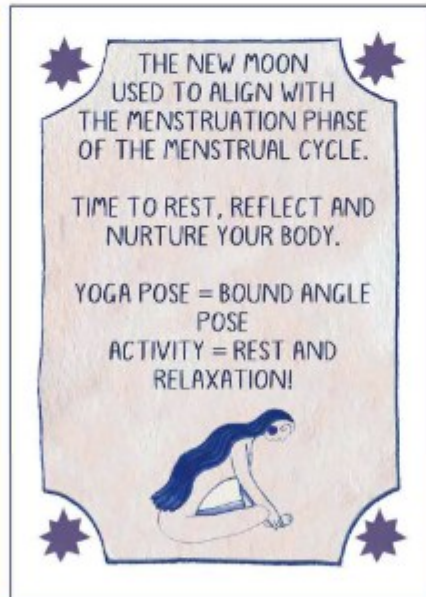
Repeat patterns designed on Illustrator, 2023.



### Journeys Postcards

A set of three gouache paintings also inspired by my time in Europe over the summer of 2022, developed into postcard designs using Photoshop.

Gouache paintings and digital typography, 2022-23.



## 'Harness Your Menstrual Cycle' Lunar Postcards

A series of postcards using the phases of the moon to represent each phase of the menstrual cycle, designed for a client's concept 'Harness Your Menstrual Cycle'.

A7 postcards, gouache and digital typography, 2023.



**London Road Gardens Illustration**  
Gouache painting inspired by the nature of London Road Gardens in Edinburgh. A mockup for a larger mural to be painted within the Gardens.

Gouache on paper, 2023.



London Road Gardens Mural Mockup  
Mural to be completed Spring 2023.





### White's Christmas Card

Commissioned company Christmas card for White's Financial Management. I was asked to reference the British monarchy through the crowns, with the forefront crown alluding to the company logo.

Procreate, 2022.



## School of Informatics Festival Poster

I was commissioned by the School of Informatics at the University of Edinburgh to create a poster advertising their Entrepreneurship Festival. Exploring themes of AI and community within the University.

Procreate and digital typography, 2023.

# Safe havens

Many young people with experience of care have painful stories to tell about insecure accommodation, tenancy breakdowns and isolation from communities. A Children in Scotland project in partnership with Staf aimed to change that by testing out new rights-based approaches to housing support. Now xxx



Words: Chris Ross

The importance of home cannot be overstated. For many of us, it is where we think of when we are tired or need rest. It should be a place where we feel happy, secure and safe.

However, for many young people with experience of care, that's not always the case. We know from a raft of evidence that transitioning into a first independent tenancy presents significant challenges for care experienced young people and care leavers across Scotland. Many tenancies break down and rates of homelessness among those who have experience of care are worryingly high. It is yet another area where we do not get it right for this community.

The Home and Belonging project looked to challenge this. Initially managed by the Life Changes Trust, it funded 11 projects to explore new, innovative ways of providing housing support to those with experience of care as they moved into their first home. It looked to improve experiences of home, connections in the community and experiences of transitions from care. It also aimed to explore how collaboration and co-design could support this, all while identifying practices that could be shared more widely.

Some funded projects looked at embedding relationship-based practice in housing support through life coaching or peer flatmate approaches. Others explored how feelings of home and belonging can be fostered in the wider community. Ultimately, all of this was aimed at identifying ways of improving outcomes for young people with experience of care as they move into their first homes.

Over the last three years, we have worked closely with Staf (Scottish Throughcare and Aftercare Forum) to evaluate the impact of the initiative, and we are excited to now be able to share these findings.

### The role of lived experience

Lived experience has been at the heart of the project. In Year 1, we worked with three young people with experience of care to develop our approach. They helped identify how the evaluation would work and build our initial thematic framework. In Year 3, we employed a Project Assistant with experience of care to support the development of our final methods and be involved in the final analysis. Aimee's contributions have been key to ensuring the findings and recommendations are grounded in concrete calls that will make a difference for young people with experience of care. (Read Aimee's perspective on page 32).

This has once again reaffirmed the value of adopting rights-based approaches. By embedding the views of people with experience of care we have been able to deliver a stronger evaluation. It has rooted our findings, and our recommendations, in what people with experience of care need and have a right to hold as their own.



**“ Power must be ceded from adults to young people. We know the transformative impact this can have, so let's support it to become the norm”**

### Key findings

The initiative has provided a range of necessary and valued support across its three-year lifespan. Through our evaluation, we've seen innovative new practices and a reaffirmation of the value of things we know work well. Achieving this in the context of the Covid-19 pandemic is impressive and we applaud all the funded projects for how they have adapted and continued to provide vital support.

The importance of ongoing relationships has been at the core of work across the projects. Building meaningful relationships has supported young people to engage with services, access support and open up about the issues they are facing. Support for people with experience of care must be grounded in relationship-based practice, young person-led, available seven days a week and on a long-term basis. We've also seen how directing finances directly to young people to identify what they need and want in their house has improved their sense of empowerment and ownership. And we saw how co-producing spaces explicitly for young people with experience of care can foster a sense of community, connection and belonging.

There has been an innovative approach to the way the corporate parenting board is delivered in Shetland, with young people now directly involved in setting the agenda and identifying areas of work. We believe there is a potential for continued embedding

of participation and the ceding of power from adults to young people so they can be involved in decisions about their lives. We know the transformative impact this can have: let's support it to become the norm.

As well as highlighting positive interventions, our evaluation also considered the gaps in provision for young people with experience of care as they move into their first home. Too often projects were supporting young people to get new homes up to an acceptable standard of furnishing and décor before they could move into them. There needs to be much greater consideration of how a higher standard of housing can be provided and maintained.

### Focus on reform

The Home and Belonging initiative has brought into focus our shared responsibility to keep The Promise to young people with experience of care. Implementation of The Promise has so far been challenging, with systemic barriers continuing to impede progress. Similar issues were faced across the Home and Belonging funded projects. If we want to realise our ambition and meet our commitments to young people with experience of care, together we have to reform and adapt policy and practice.

Young people know what home and belonging looks like to them. We need to listen and act to ensure they experience it. ■



'Insight' Magazine Editorial  
I created this illustration for a university project responding to the article titled 'Safe Havens' in the charity Children in Scotland's magazine. Article author Chris Ross.

Digital mockup of my Procreate illustration in the article, 2022.