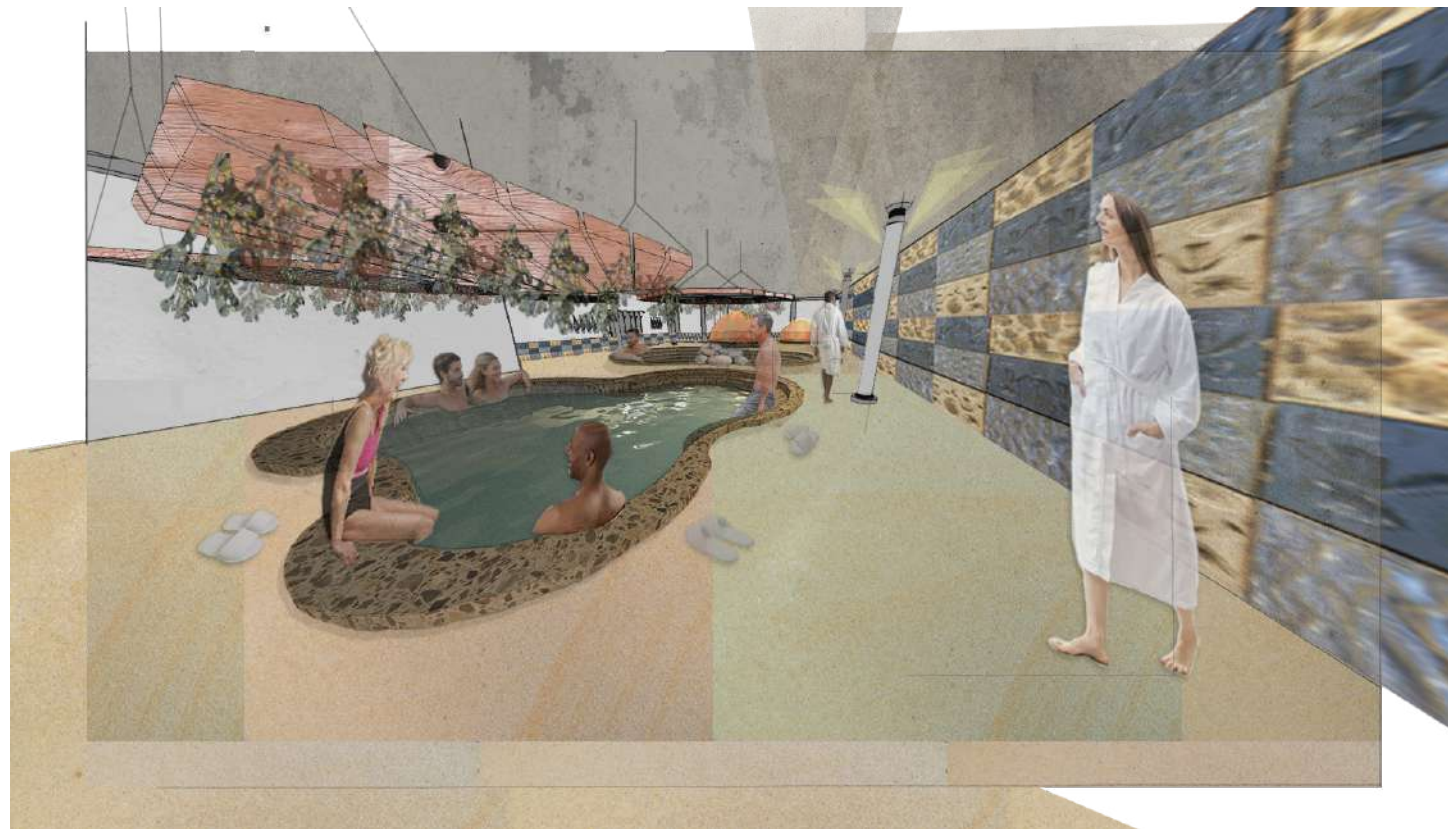


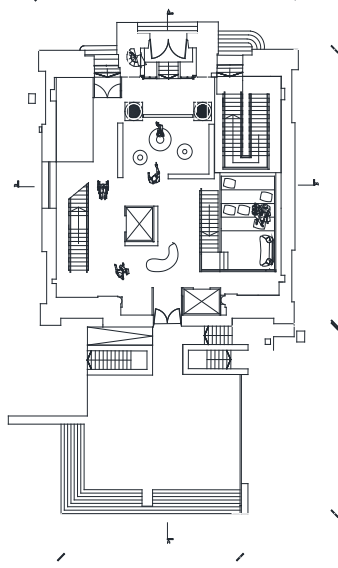
**Georgia
Anne
White**

Portfolio



**G
A
W**

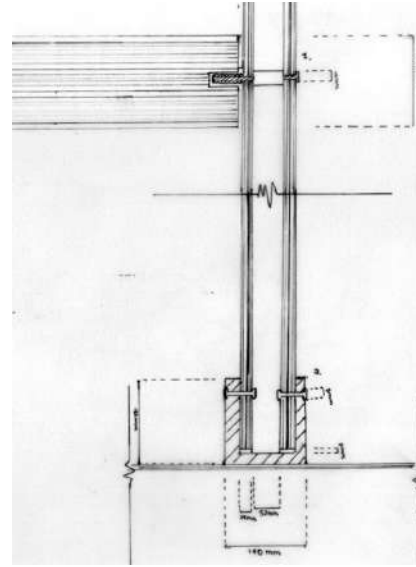
Portfolio



Art and Design Library
(2022)



Lighting Design
(2022)

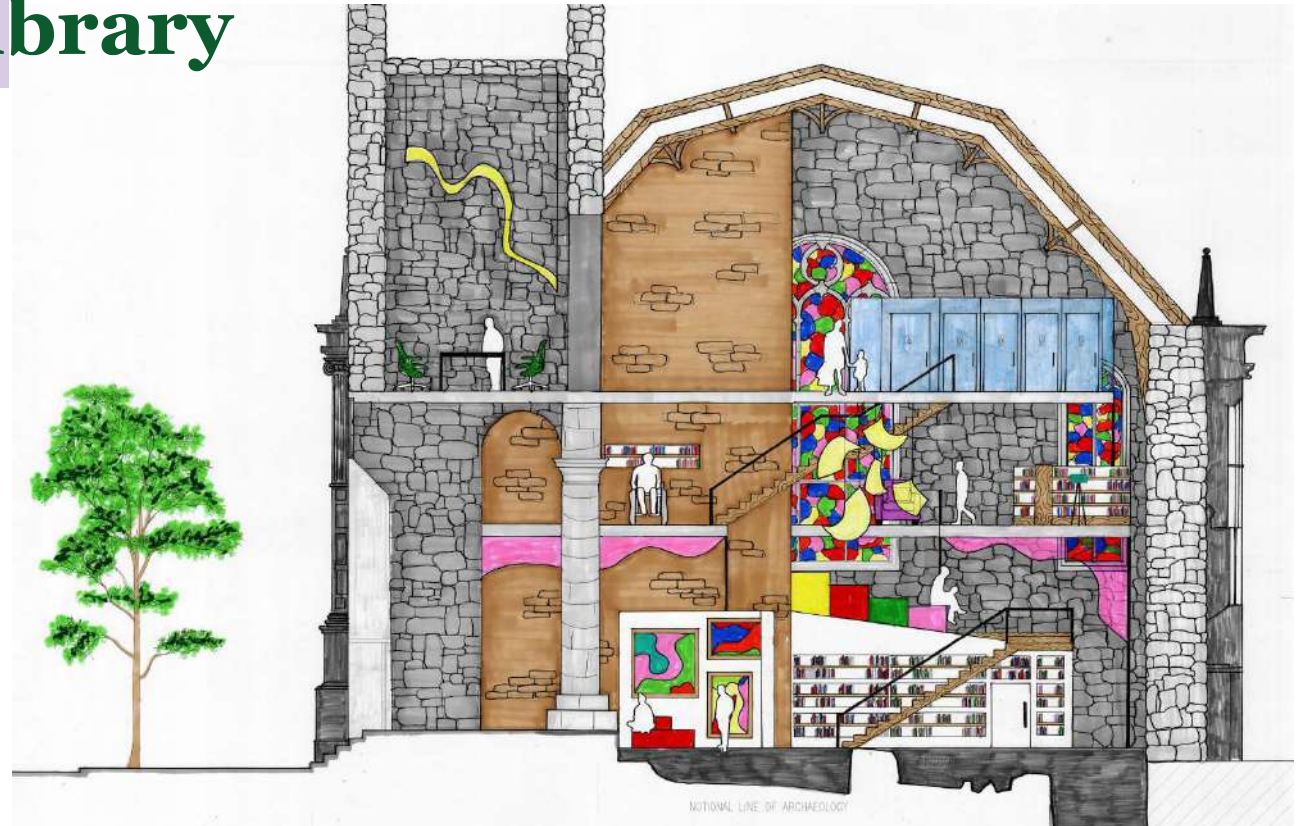
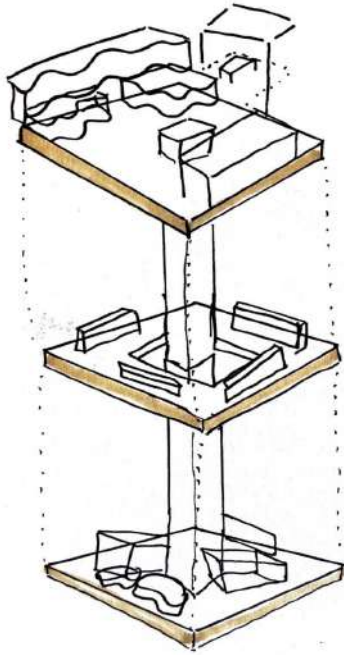


Detailing
(2021)



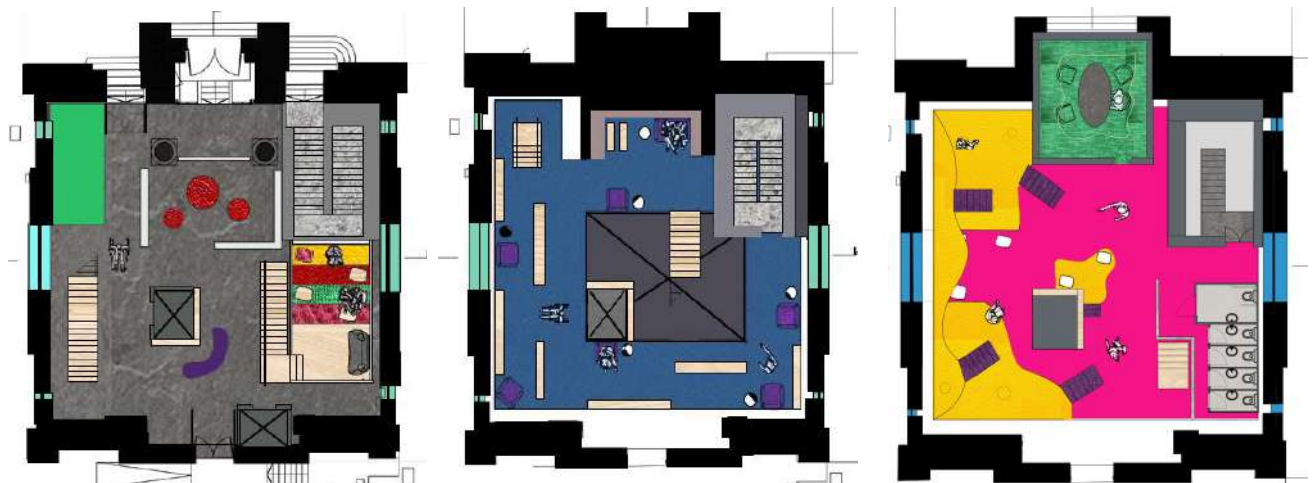
Grannus Healing
(2023)

Art and Design Library



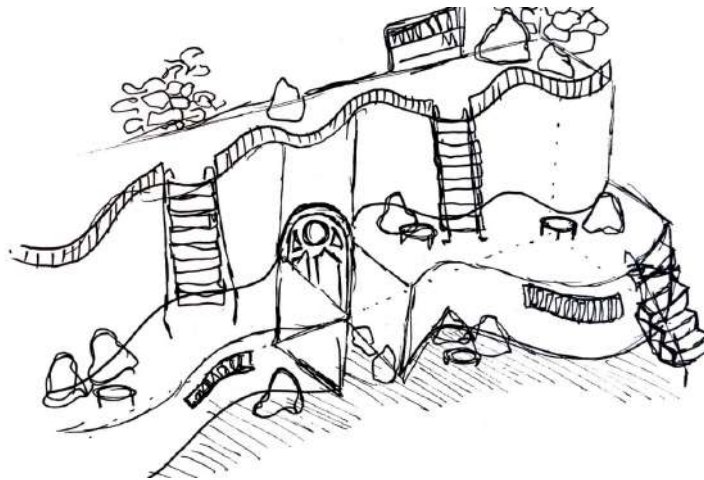
The Art and Design library featured themes of playfulness and creativity to create a library space within the historic Tron Kirk in Edinburgh.

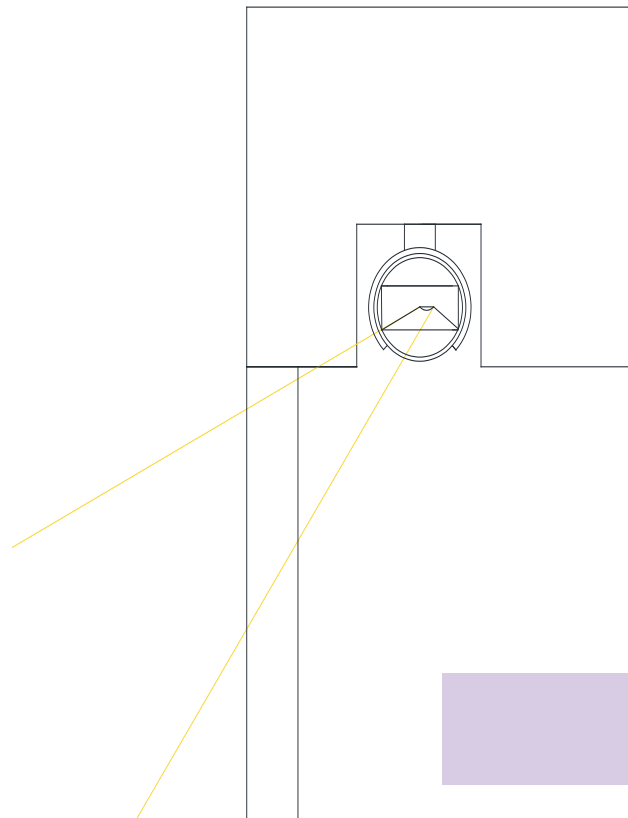
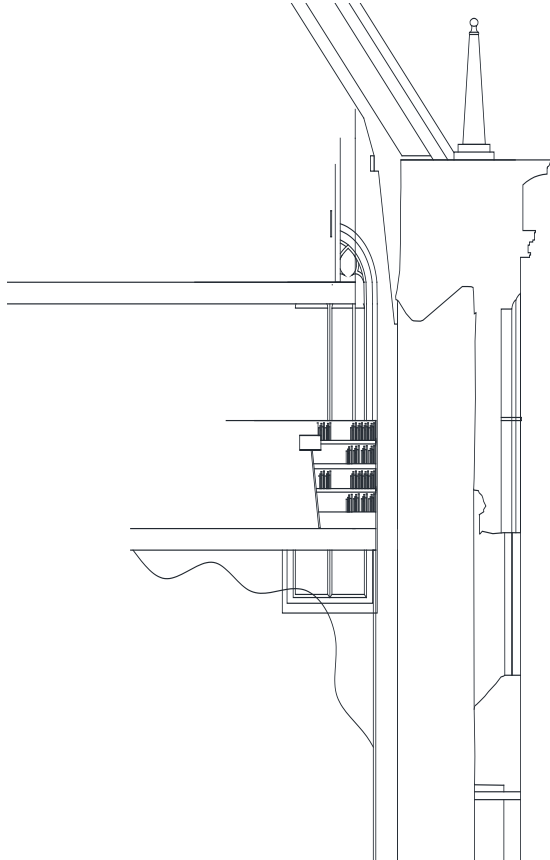
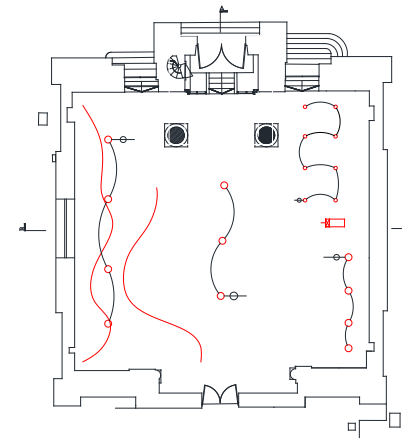
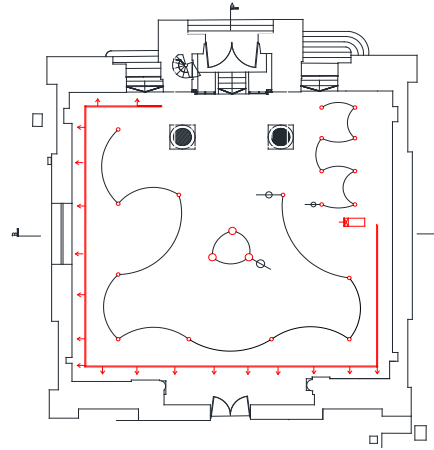
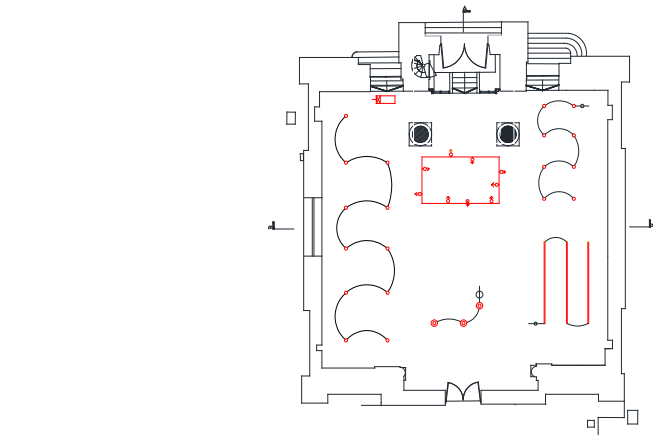
This design consists of three levels, the ground floor private study spaces and gallery area, the first level which featured a balcony and quiet spaces to reading. The second level was for the children's library space focusing on unconventional shapes and spaces, this also features to the entrance to the clock tower and meeting room.



Art and Design Library

This project featured **model making** skills as well as **conception sketches** and **collages**. Final imagery and **rendering** were carried out both on **Photoshop** and by **hand**



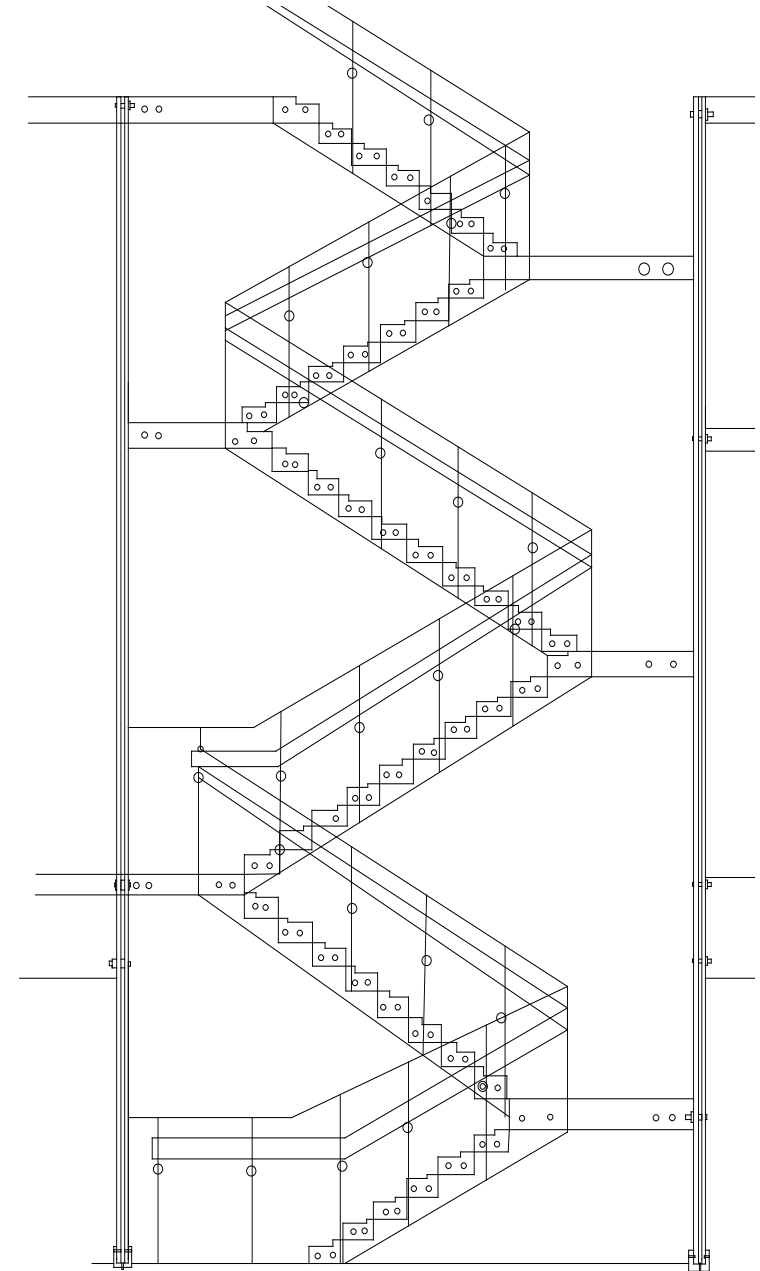
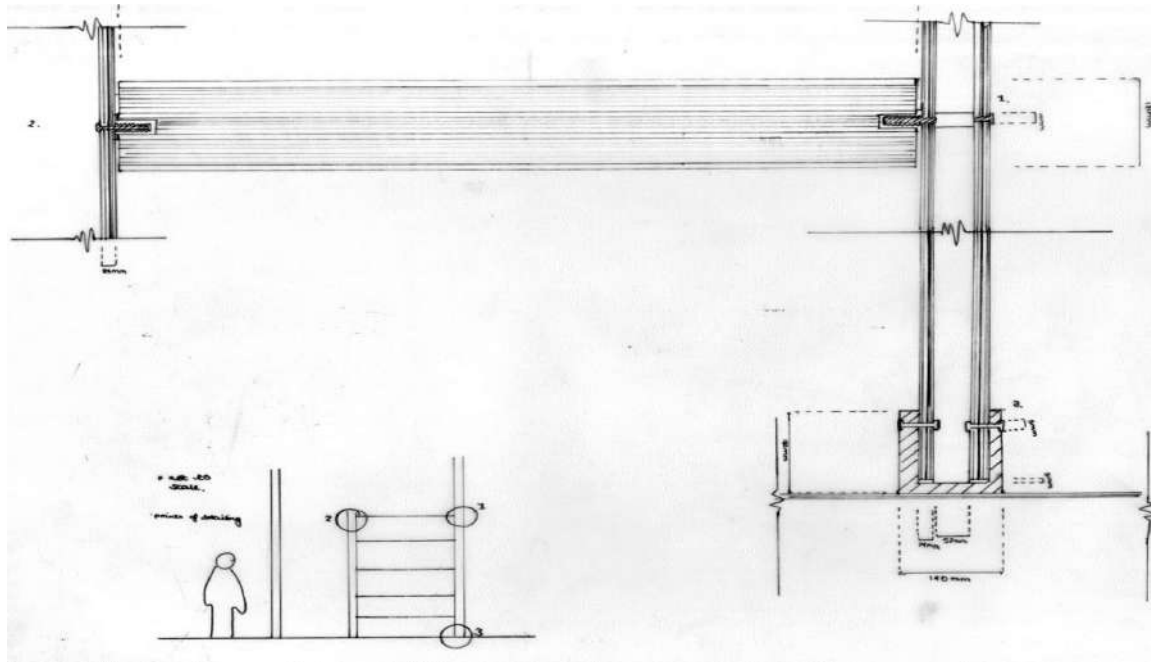
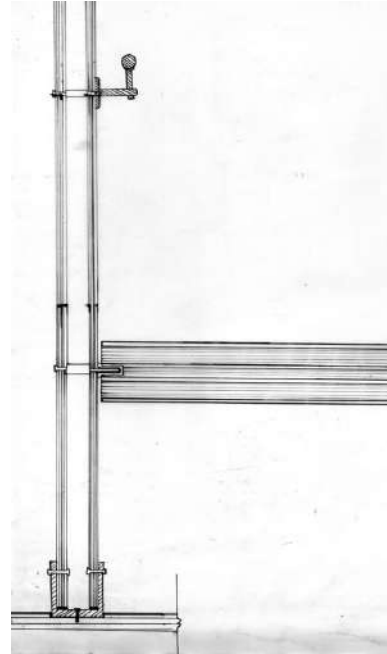


General lighting surrounding the perimeter of the building featured Wall Wash 3000K surface mounted lighting which highlighted the texture and look of the old brick which made up the Tron Kirk. Drawings on Auto-cad detail the look and location of the lighting Plan drawings explain the relationship between the lighting and the drivers tracks.

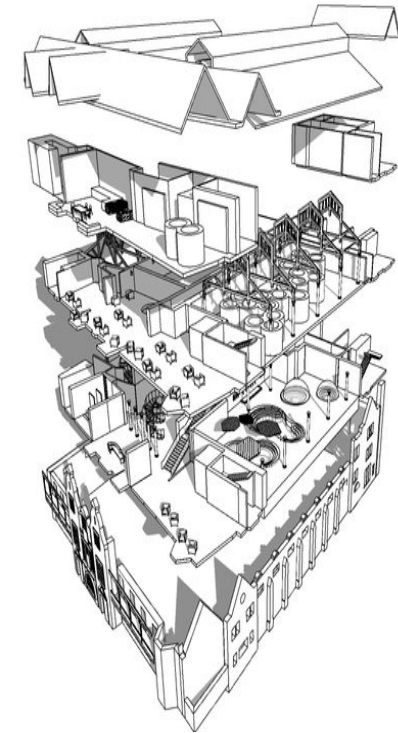
Lighting Design

Detailing Glass Staircase

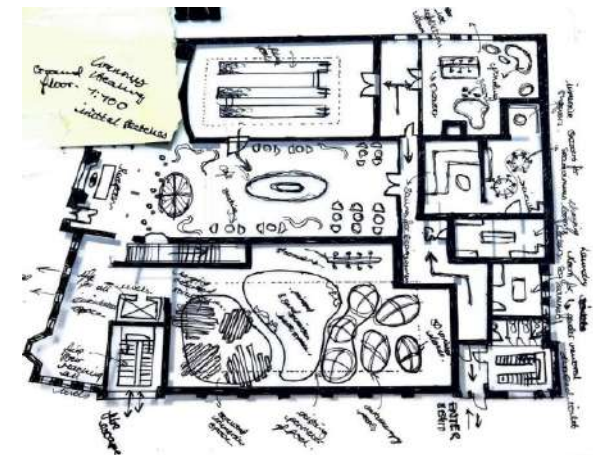
Detailing a glass staircase within a retail project. The glass was a laminated glass to ensure the strength of the structure, the glass rises were floating and featured fixings and joints to the exterior glass wall. Detailing also included the relationship between the joinery of the stair and the ground floor. Many of these drawings were done by hand with the full staircase drawn on CAD.



Grannus Healing



My final year project focused on the healing elements of the coast and was an experimental spa which focused on improving well-being. The building was a Victorian Swimming Pool on Edinburgh's Coast. The project featured lots of pools for bathing with sensory designs.



The Project included **research, reports, detailing, lighting, material studies** as well as **general spatial arrangements** and **design interventions**. Digital model and rendering made up some of the final proposals.

Grannus Healing

